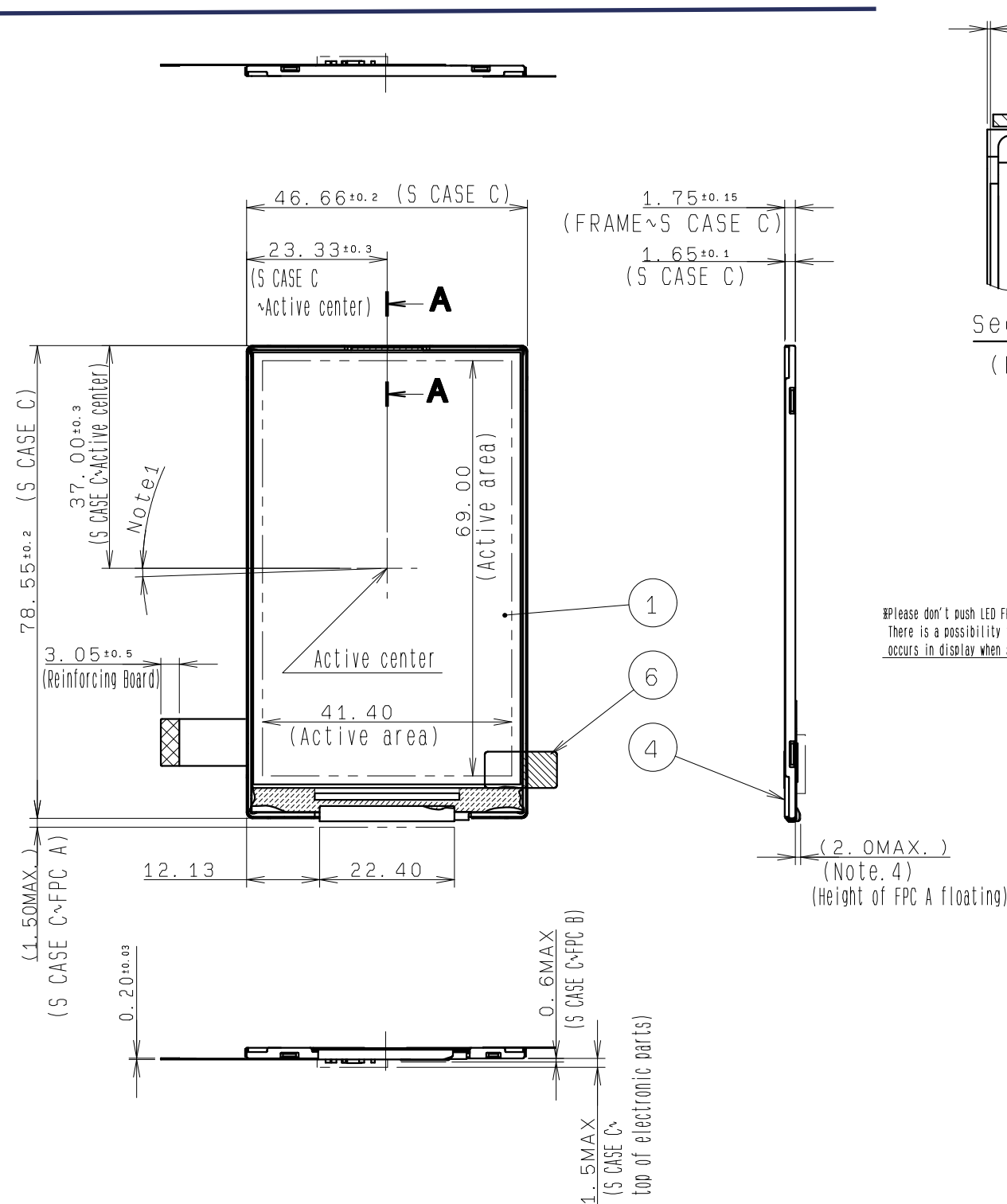
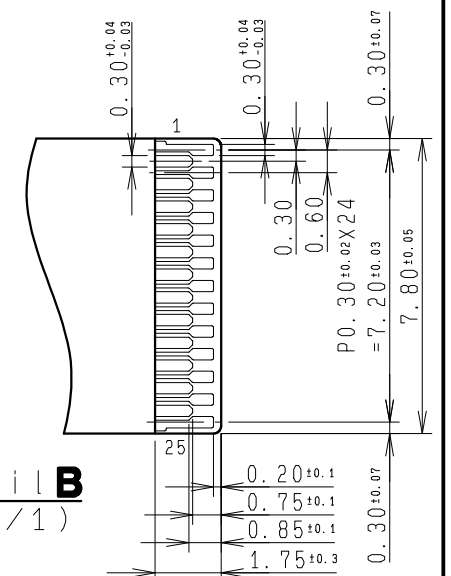
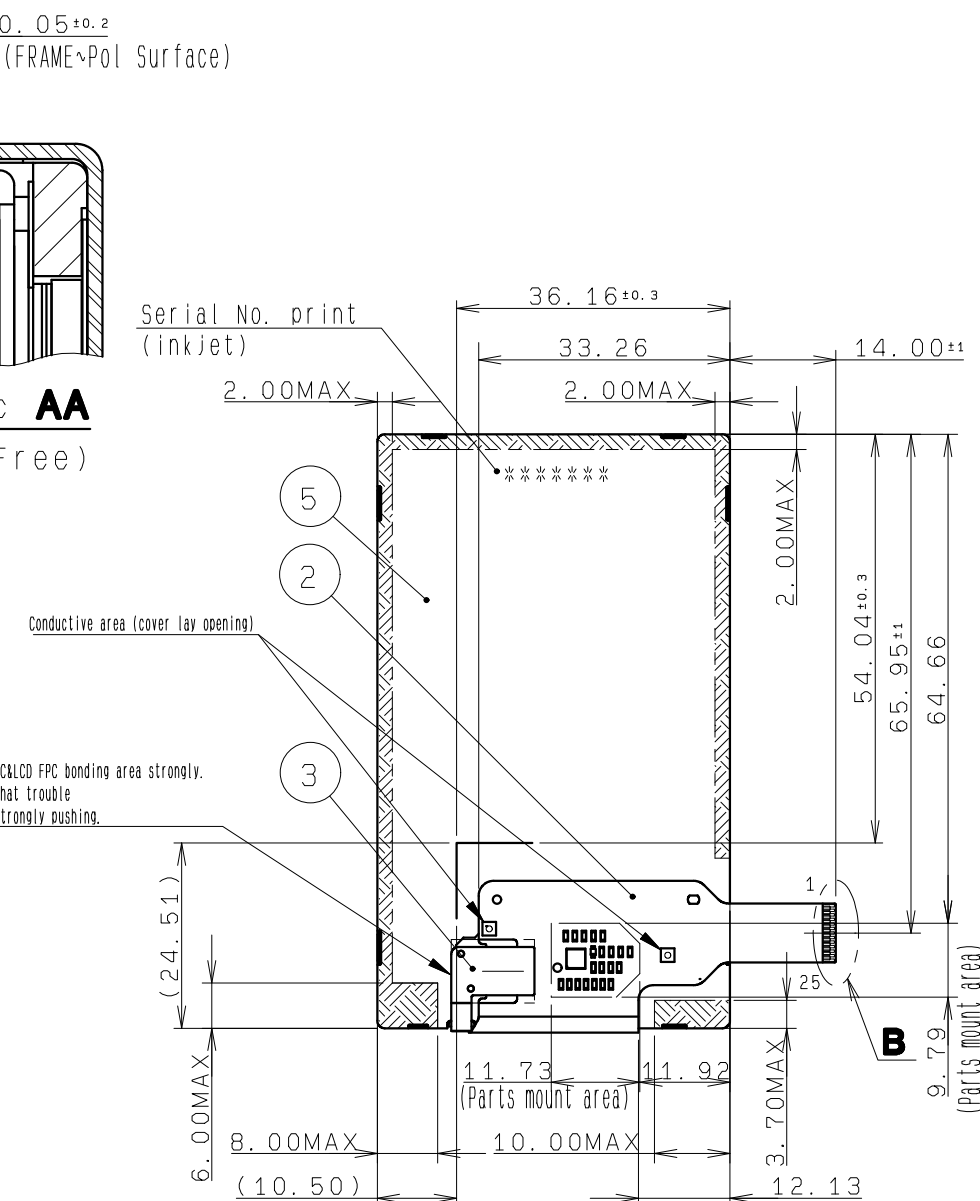


MIPI INTERFACE 3.2" DISPLAY

EC No.	REV. No.	REVISE	DATE (Y:M:D)	APPROVED	CHECKED	PREPARED



※Please don't push LED FPC&LCD FPC bonding area strongly.
There is a possibility that trouble
occurs in display when strongly pushing.



- Note 1. Angular deviation of LCD cell from the TFT-LCD monitor's reference axis shall be less than $\pm 40'$.
- Note 2. Protective film is affixed on front surface of the screen.
Location tolerance of the protective film shall be ± 1.5 mm to the polarizing film.
- Note 3. In order to realize thin module structure, double-sided adhesive tapes are used to fix LCD panels.
As these tapes do not guarantee to permanently fix the panels, LCD panel may rize from the module when shipped from factory.
So please make sure to design the system to hold the edges of LCD panel by the soft material such as sponge when LCD module is assembled into the cabinet.
- Note 4. In order to realize thin module structure, double-sided adhesive tapes are used to fix FPC at S CASE C. As these tapes do not guarantee to permanently fix the FPC near the bending area, FPC may rize from the module when shipped from factory.
- Note 5. In case TFT-LCD monitor is fixed to the case of your product, it's recommended that monitor is fixed in to area.
- Note 6. Recommended FPC connector.
For FPC A: HRS FH35C-25S-0.3SHW

	7			
R TAPE	6			
S CASE C	5		SUS (t=0.2)	
FRAME	4		PC	
FPC B	3			Use of LED
FPC A	2			Use of LCD
TFT-LCD PANEL	1		Glass thickness=0.2t+0.2t	
PART NAME	ITEM	PART CODE	MODEL NUMBER	REMARK
APPROVED	GENERAL TOLERANCE ± 0.5	SCALE 1/1	UNIT mm	
CHECKED	ISSUE (Y:M:D) 21:03:10	MODEL		
CHECKED	NAME			
DESIGN				
DRAW				
OUTLINE-D3				
				RY
DRAWING NO.				REV.
				SHEET
				DIV.